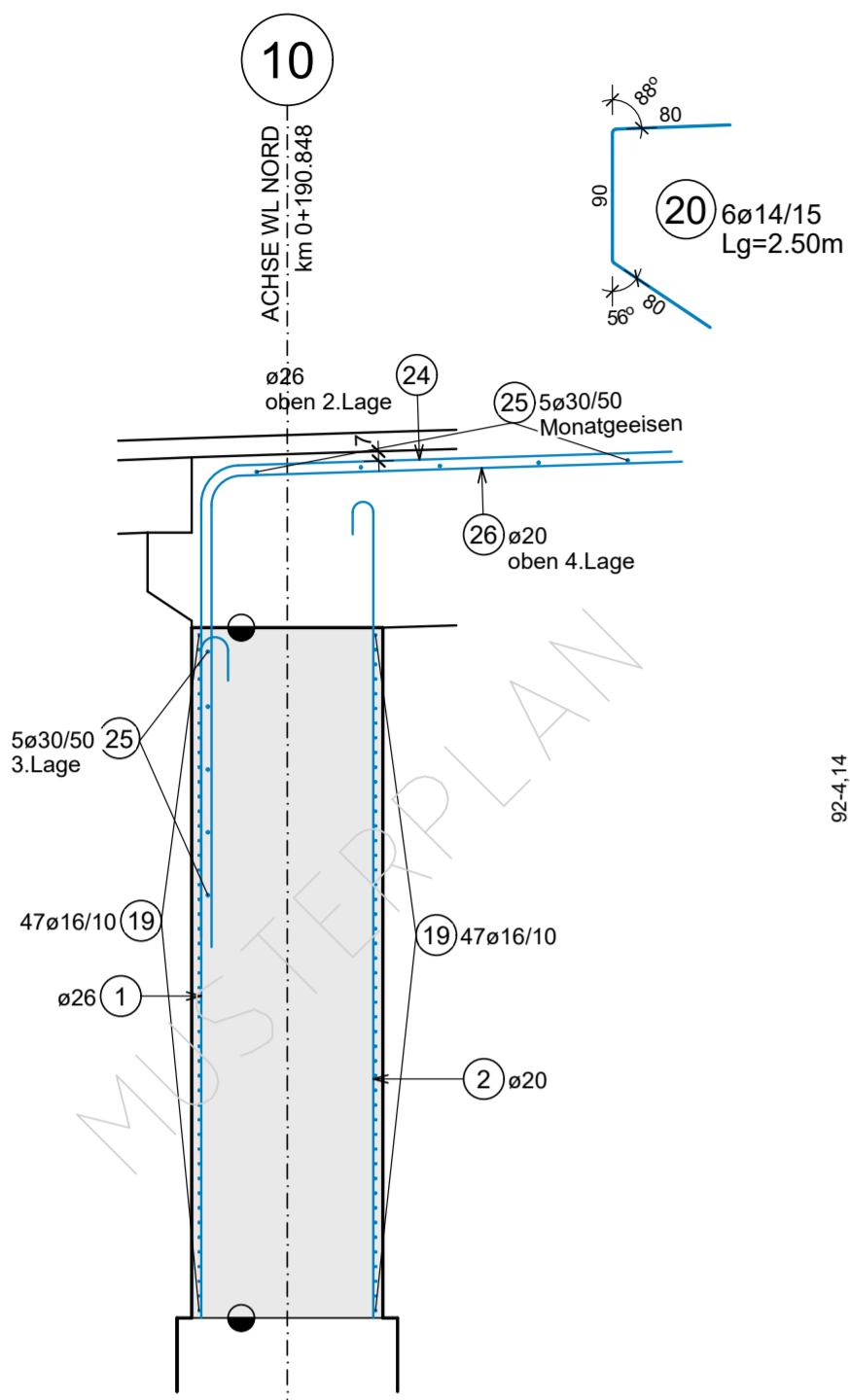
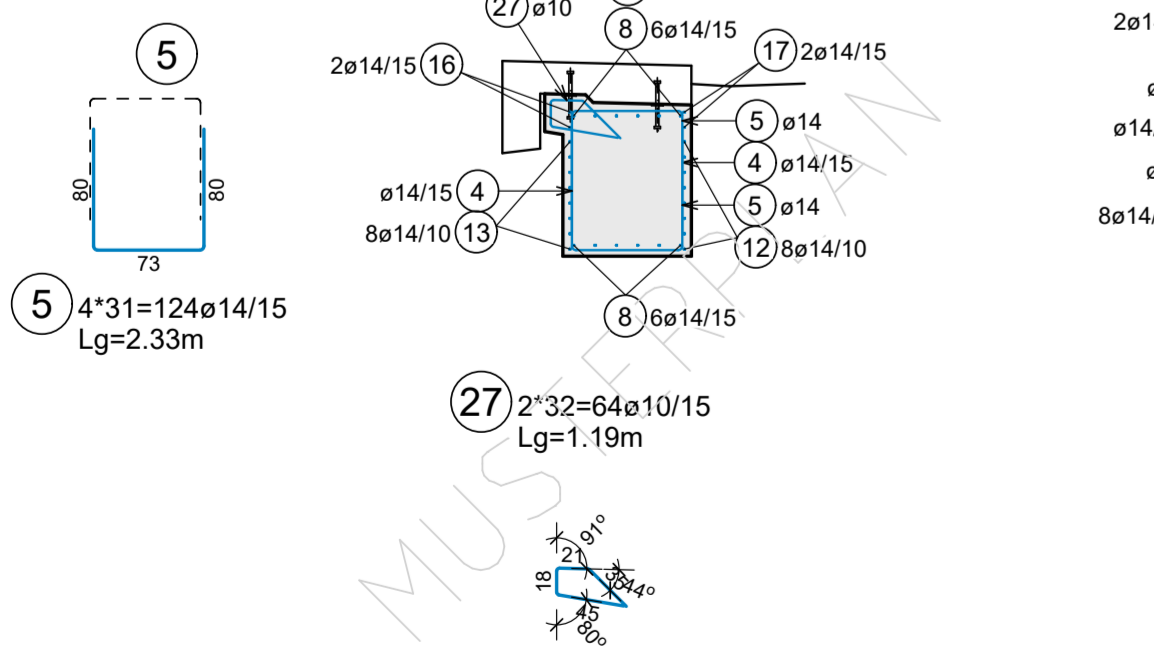


SCHNITT 1-1 M 1:50
In TW-Achse

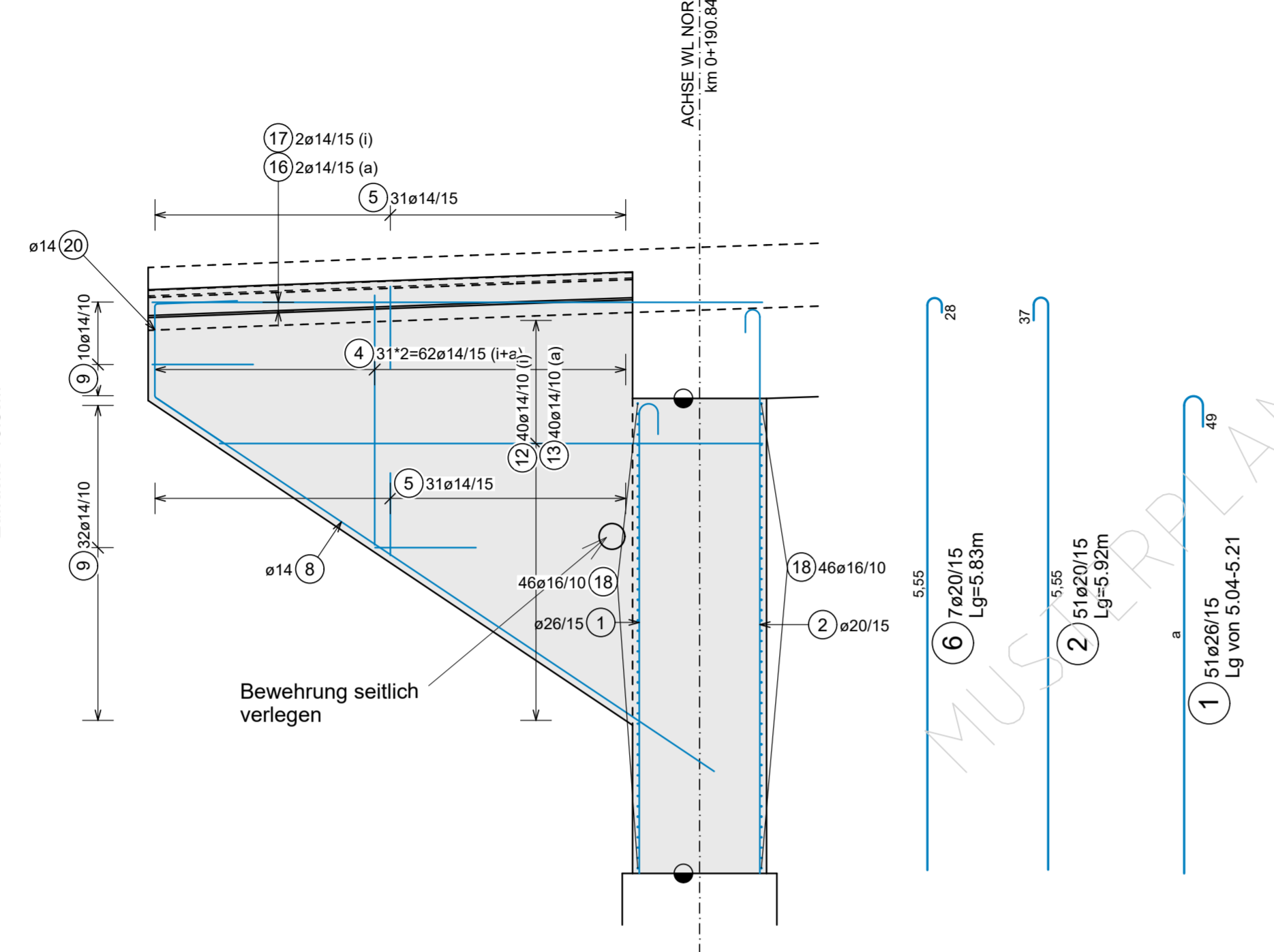


| St | Ø (mm) | St | Ø (mm) |
|----|-----------|----|-----------|
| 1 | 2*1 0,915 | 17 | 2*1 2,635 |
| 2 | 2*1 1,025 | 18 | 2*1 2,745 |
| 3 | 2*1 1,130 | 19 | 2*1 2,850 |
| 4 | 2*1 1,240 | 20 | 2*1 2,960 |
| 5 | 2*1 1,345 | 21 | 2*1 3,070 |
| 6 | 2*1 1,455 | 22 | 2*1 3,175 |
| 7 | 2*1 1,560 | 23 | 2*1 3,285 |
| 8 | 2*1 1,670 | 24 | 2*1 3,390 |
| 9 | 2*1 1,775 | 25 | 2*1 3,500 |
| 10 | 2*1 1,885 | 26 | 2*1 3,605 |
| 11 | 2*1 1,990 | 27 | 2*1 3,715 |
| 12 | 2*1 2,100 | 28 | 2*1 3,820 |
| 13 | 2*1 2,205 | 29 | 2*1 3,930 |
| 14 | 2*1 2,315 | 30 | 2*1 4,035 |
| 15 | 2*1 2,420 | 31 | 2*1 4,145 |
| 16 | 2*1 2,530 | | |

SCHNITT 3-3 M 1:50
In Endpunkt Hängeflügel Süd

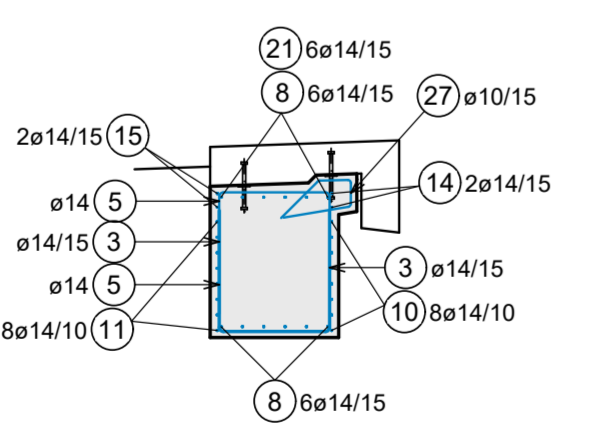


ANSICHT A-A M 1:50
Hängeflügel Süd
(abgewinkelte Darstellung)

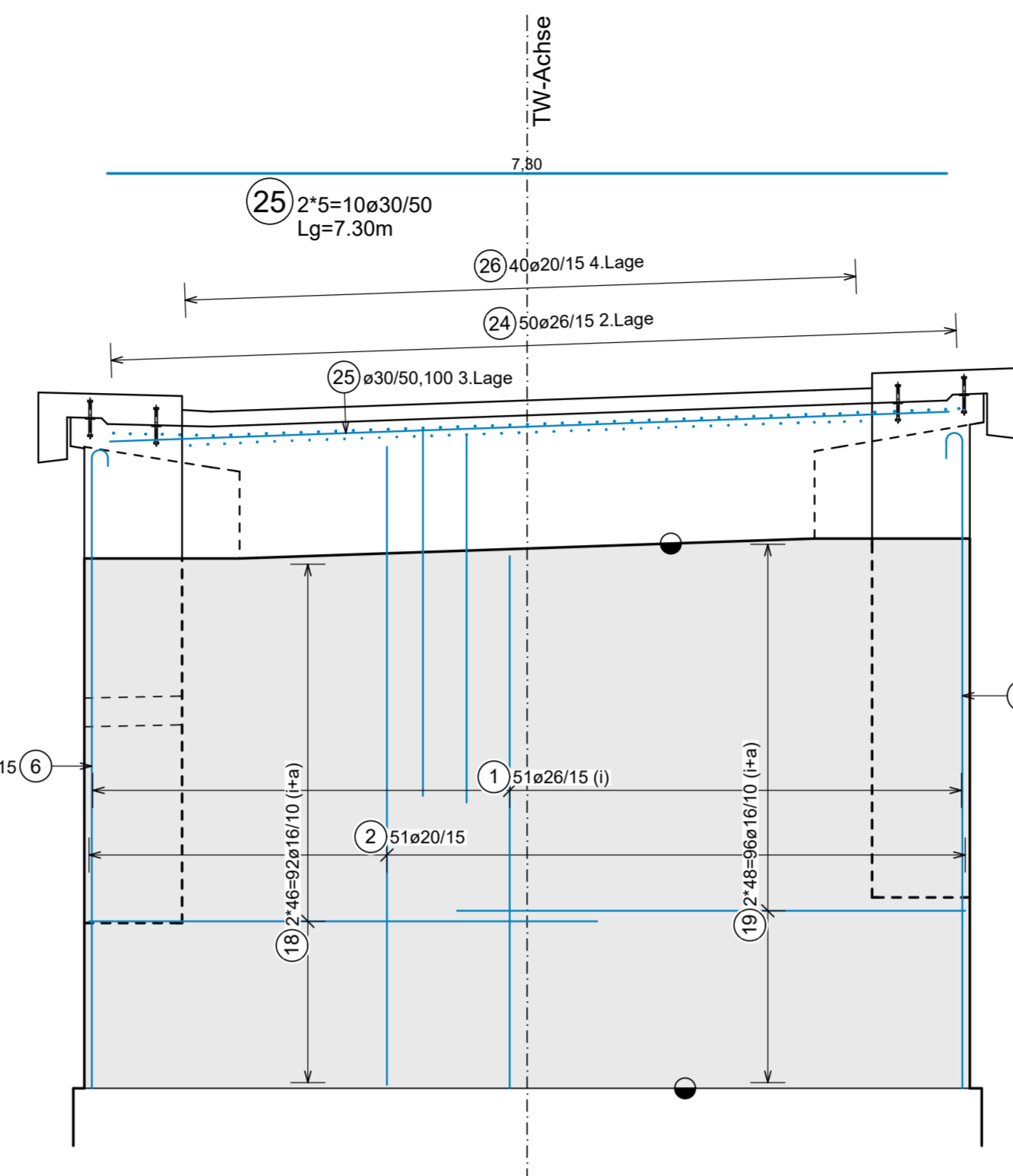


| St | Ø (mm) | St | Ø (mm) |
|----|-------------|----|-------------|
| 1 | 51e20/15 | 6 | 7e20/15 |
| 2 | 51e20/15 | 7 | 7e20/15 |
| 3 | 4,965 5,190 | 8 | 4,965 5,190 |
| 4 | 4,965 5,190 | 9 | 4,965 5,190 |
| 5 | 4,965 5,190 | 10 | 4,965 5,190 |
| 6 | 4,965 5,190 | 11 | 4,965 5,190 |
| 7 | 4,965 5,190 | 12 | 4,965 5,190 |

SCHNITT 4-4 M 1:50
In Endpunkt Hängeflügel Nord

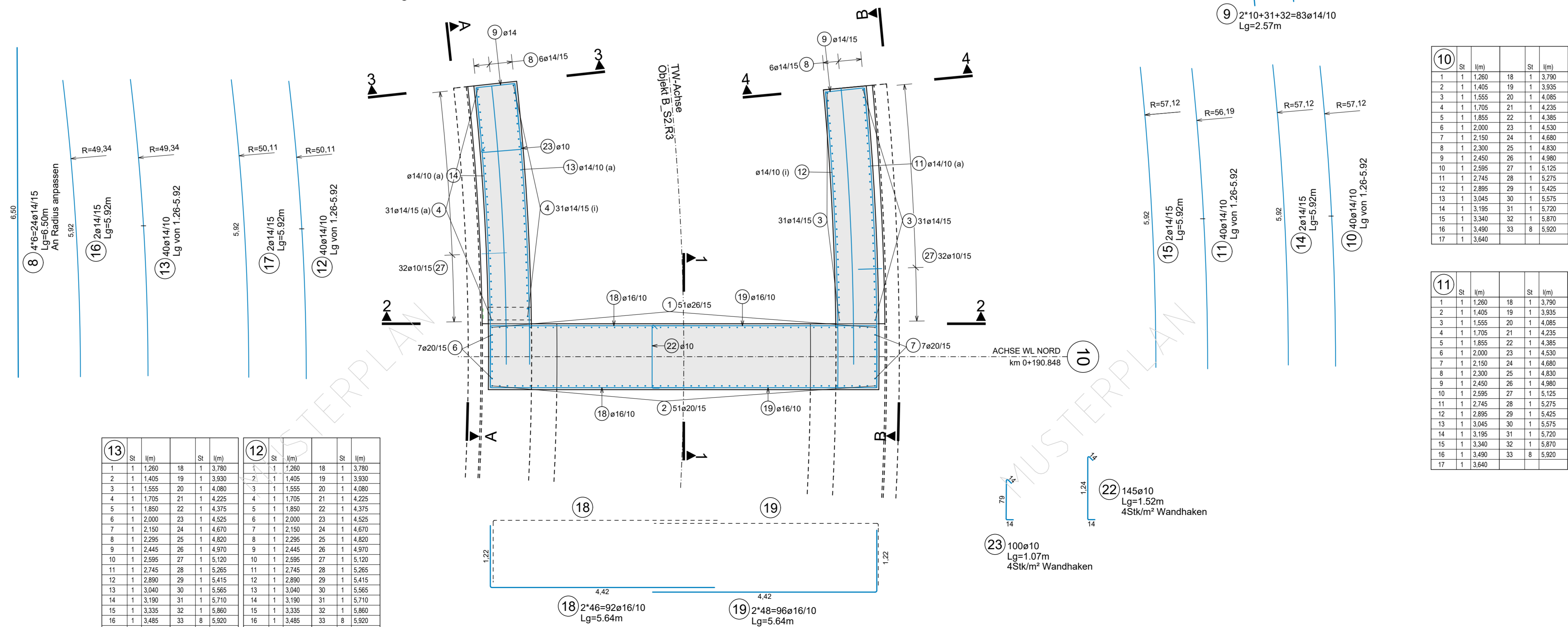


SCHNITT 2-2 M 1:50
Außenkante



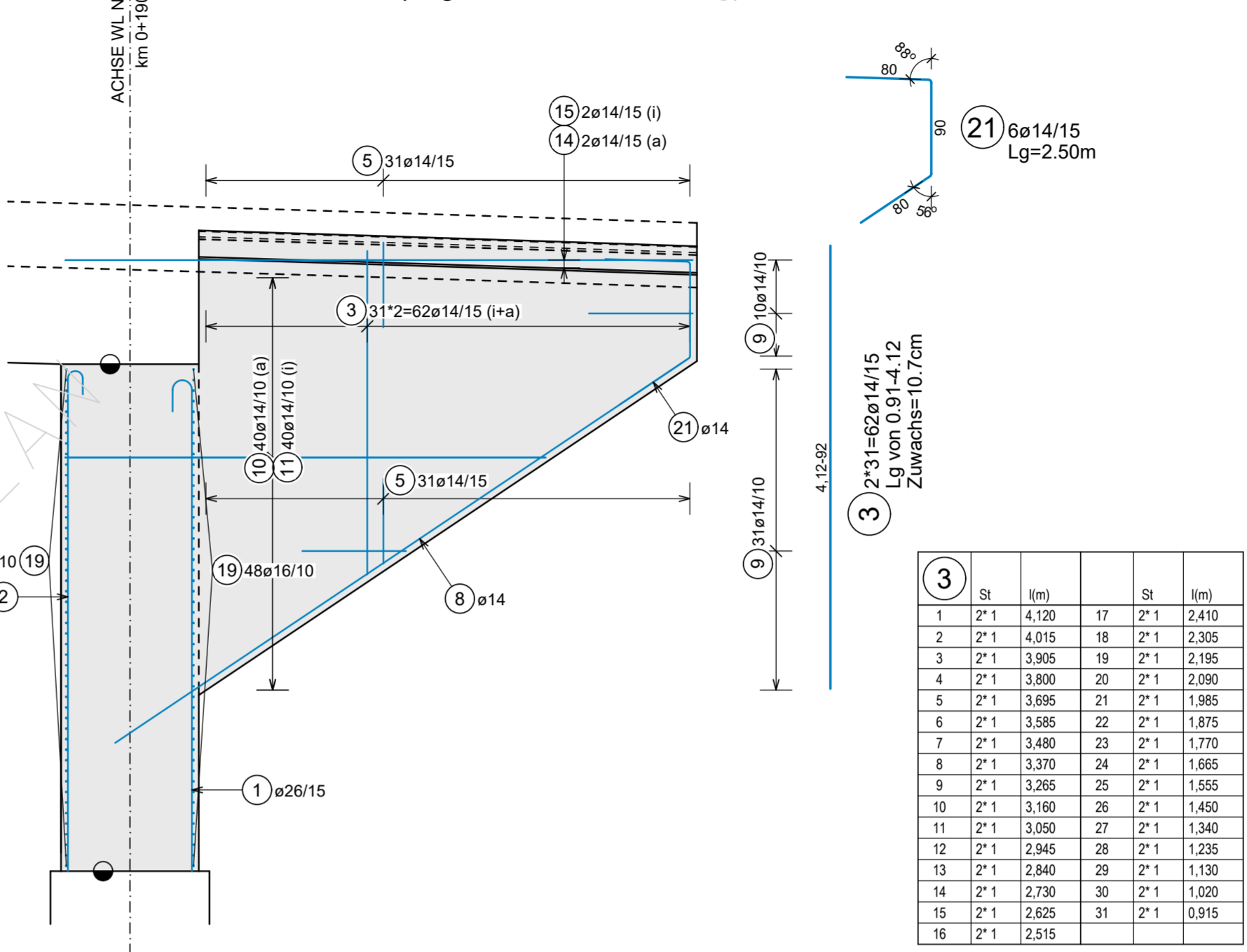
| St | Ø (mm) | St | Ø (mm) |
|----|-------------|----|-------------|
| 1 | 51e20/15 | 6 | 7e20/15 |
| 2 | 51e20/15 | 7 | 7e20/15 |
| 3 | 4,965 5,190 | 8 | 4,965 5,190 |
| 4 | 4,965 5,190 | 9 | 4,965 5,190 |
| 5 | 4,965 5,190 | 10 | 4,965 5,190 |
| 6 | 4,965 5,190 | 11 | 4,965 5,190 |
| 7 | 4,965 5,190 | 12 | 4,965 5,190 |

DRAUFSICHT M 1:50
Aufgehendes



| St | Ø (mm) | St | Ø (mm) |
|----|---------|----|---------|
| 1 | 1 1,260 | 18 | 1 3,780 |
| 2 | 1 1,405 | 19 | 1 3,935 |
| 3 | 1 1,555 | 20 | 1 4,090 |
| 4 | 1 1,705 | 21 | 1 4,245 |
| 5 | 1 1,850 | 22 | 1 4,400 |
| 6 | 1 2,000 | 23 | 1 4,555 |
| 7 | 1 2,150 | 24 | 1 4,710 |
| 8 | 1 2,295 | 25 | 1 4,865 |
| 9 | 1 2,445 | 26 | 1 5,020 |
| 10 | 1 2,595 | 27 | 1 5,175 |
| 11 | 1 2,745 | 28 | 1 5,330 |
| 12 | 1 2,890 | 29 | 1 5,485 |
| 13 | 1 3,040 | 30 | 1 5,640 |
| 14 | 1 3,190 | 31 | 1 5,795 |
| 15 | 1 3,335 | 32 | 1 5,950 |
| 16 | 1 3,485 | 33 | 1 6,105 |
| 17 | 1 3,635 | | |

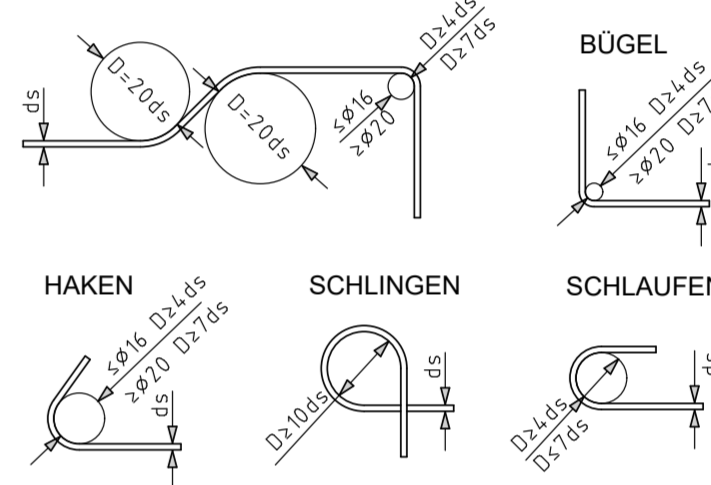
ANSICHT B-B M 1:50
Hängeflügel Nord
(abgewinkelte Darstellung)



| St | Ø (mm) | St | Ø (mm) |
|----|-----------|----|-----------|
| 1 | 2*1 4,330 | 17 | 2*1 2,410 |
| 2 | 2*1 4,015 | 18 | 2*1 2,305 |
| 3 | 2*1 3,905 | 19 | 2*1 2,195 |
| 4 | 2*1 3,800 | 20 | 2*1 2,090 |
| 5 | 2*1 3,695 | 21 | 2*1 1,985 |
| 6 | 2*1 3,585 | 22 | 2*1 1,875 |
| 7 | 2*1 3,480 | 23 | 2*1 1,770 |
| 8 | 2*1 3,370 | 24 | 2*1 1,665 |
| 9 | 2*1 3,265 | 25 | 2*1 1,555 |
| 10 | 2*1 3,160 | 26 | 2*1 1,450 |
| 11 | 2*1 3,050 | 27 | 2*1 1,340 |
| 12 | 2*1 2,945 | 28 | 2*1 1,235 |
| 13 | 2*1 2,840 | 29 | 2*1 1,130 |
| 14 | 2*1 2,730 | 30 | 2*1 1,020 |
| 15 | 2*1 2,625 | 31 | 2*1 0,915 |
| 16 | 2*1 2,515 | | |

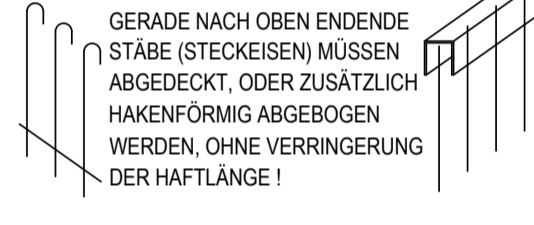
| Pos. | Anz. | Ø | Länge | Bem.: | Pos. | Anz. | Ø | Länge | Bem.: |
|------|------|----|-------|-------|------|------|----|-------|-------|
| 1 | 51 | 26 | 5,12 | .M. | 15 | 2 | 14 | 5,92 | |
| 2 | 51 | 20 | 5,92 | | 16 | 2 | 14 | 5,92 | |
| 3 | 62 | 14 | 2,52 | .M. | 17 | 2 | 14 | 5,92 | |
| 4 | 62 | 14 | 2,53 | .M. | 18 | 92 | 16 | 5,64 | |
| 5 | 124 | 14 | 2,33 | | 19 | 96 | 16 | 5,64 | |
| 6 | 7 | 20 | 5,83 | | 20 | 6 | 14 | 2,50 | |
| 7 | 7 | 20 | 6,07 | | 21 | 6 | 14 | 2,50 | |
| 8 | 24 | 14 | 6,50 | | 22 | 145 | 10 | 1,92 | |
| 9 | 83 | 14 | 2,57 | | 23 | 100 | 10 | 1,07 | |
| 10 | 40 | 14 | 4,04 | .M. | 24 | 50 | 26 | 6,40 | |
| 11 | 40 | 14 | 4,04 | .M. | 25 | 10 | 30 | 7,30 | |
| 12 | 40 | 14 | 4,03 | .M. | 26 | 40 | 20 | 6,40 | |
| 13 | 40 | 14 | 4,03 | .M. | 27 | 64 | 10 | 1,19 | |
| 14 | 2 | 14 | 5,92 | | | | | | |

BIEGEANWEISUNG FÜR B 550 B
LT. ÖNORM EN 1992-1-1



BAUSTOFFE: B 550 B
BETONDECKUNG: 4.0 cm

UNFALLSCHUTZ !!!



ASFINAG BAU MANAGEMENT GMBH
im Namen der



Ausführungsprojekt

MUSTERPLAN BRÜCKE
Bewehrungsplan Aufgehendes Widerlager
Grundriss, Schnitte

| | | | |
|----------------------|--|-----------------------------|--|
| Projektant | | ASFINAG Bau Management GmbH | |
| Prüfingenieur | | Ausführende Firma | |
| Ortliche Bauaufsicht | | Ausführende Firma | |
| Datum: | | Datum: | |
| Gezeichnet: | | Datum: | |
| Geprüft: | | Datum: | |
| Datum: | | Datum: | |
| Fläche: | | Datum: | |
| 0,71m² | | Datum: | |
| ASFINAG-PLANNUMMER: | | Datum: | |
| 1:50 | | Datum: | |
| MASSTAB | | Datum: | |
| AUSFERTIGUNG | | Datum: | |
| EINLAGE | | Datum: | |